











MTE Bewegungstechnik GmbH & Co. KG
Dammstrasse 27
71384 Weinstadt, Germany
Phone: +49 (0)7151-97913-0
Fax: +49 (0)7151-74764
Email: info@mte-motors.de
Home: www.mte-motors.de
www.mte-watchwinder.com

MTE Watch Winder

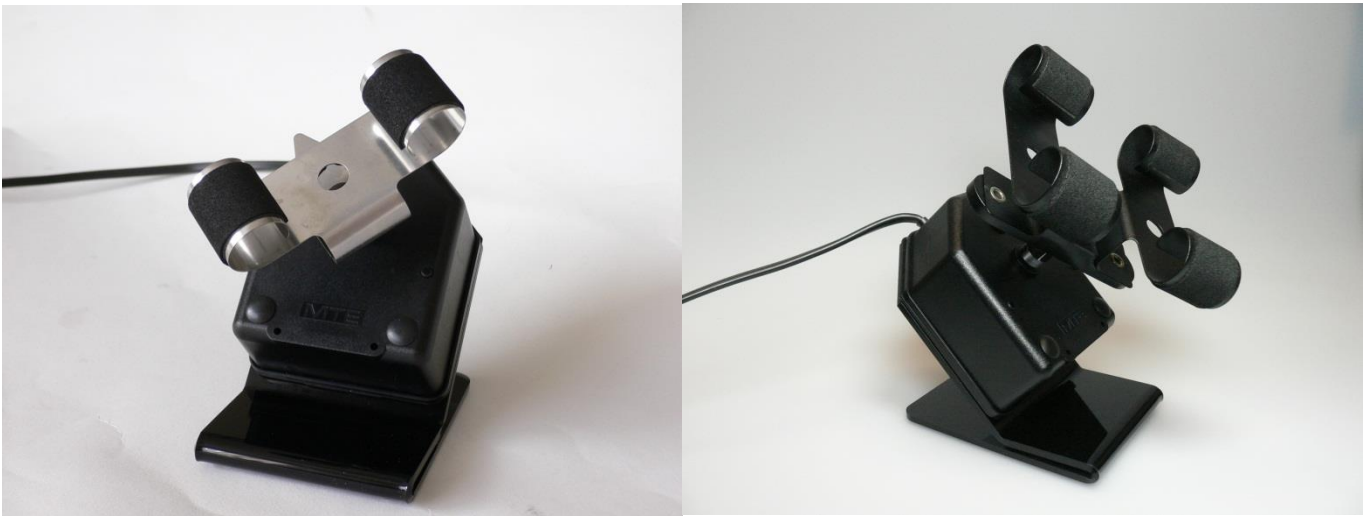
September 2015



Watch Winder Models - Overview:

	WTS 220:	for 1 – 2 Watches	Page 3
	WTA 220:	for 1 – 2 Watches	Page 4
	Classic 2000:	for 1 – 2 Watches	Page 5
	WTS 4:	for up to 4 Watches	Page 6
	WTS 4 Royal Navy:	for up to 4 Watches	Page 7
	WTS 4 Galaxy:	for up to 4 Watches	Page 8
	Watch Collector:	for up to 9 Watches	Page 9
	BIG 3 / 6:	for up to 24 Watches	Page 10

WTS 220



Standard chronograph watch winder accommodates one or two chronographs. High quality synchronous geared motor drive. Rotation direction happens randomly. (Specific direction of rotation can be achieved by plugging the device in and out).

Data

- 230/115 V / 4 Watt
- Color: white or black
- Stand: acrylic clear or black
- Virtually silent
- Safety clutch
- Spring: chrome nickel steel or plastic
- Overprint of your own logo: prerequisite is a minimum order quantity
- Weight: 0,33 kg
- Dimensions: h 130, w 80, d 110 mm

Other colors:

- Housing black or white, stand clear or black



WTA 220



Electronically controlled watch winder with AC/DC adapter. Accommodates 1 or 2 precision time pieces. The unit is equipped with a 3-way switch: Clockwise rotation / off / counter clockwise rotation. This means it can be adjusted to suit watches with either clockwise or counter clockwise winding mechanism.

Data

- 230 V/3 V AC/DC adapter or
- 115 V/3 V AC/DC adapter
- Battery operation possible
- Housing: anthracite Nextel color
- Virtually silent
- Weight: 0,35 kg
- Dimensions: h 180, w 110, d 135 mm

Other colors:

- Piano black finish



Classic 2000



Precious looking case made of solid wood mahogany, high quality German hand crafted. High gloss multilayer finish. Two watch retaining springs to keep two wrist watches wound. Large indicator window of clear real glass. 3-way switch for clockwise / off / counter clockwise operation.

Data

- Housing: solid mahogany wood
- Color: high gloss multilayer finish
- Electronically controlled
- Virtually silent
- Safety clutch
- 230 V / 3 V AC/DC adapter or
- 115 V / 3 V AC/DC adapter
- Battery operation possible
- With battery checker
- Weight: 2,3 kg
- Dimensions: h 190, w 165, d 195 mm

WTS 4



Accommodation for up to 4 watches to be kept running at the same time. Rotating times and stops are controlled electronically. Rotation direction occurs randomly either clockwise or counter clockwise after each stop and break time.

Data

- Housing: zinc diecasting, anthracite Nextel coating
- Springs: nickel chromium steel or plastic
- Springs covered with soft PVC pads
- Easy handling
- Integrated safety clutch
- Electronically controlled
- Virtually silent
- 230 / 110 V AC, 4 Watt
- Weight: 1,25 kg
- Dimensions: Ø 210, h 140 mm (incl. watch retaining springs)

Special edition in chrome finish (available on request):



WTS 4 Royal Navy



Solid wood pedestal in exclusive mahogany with brass plates and with blown acrylic glass hood. Accommodation for up to 4 watches to be kept running at the same time. Rotating times and stops are controlled electronically. Rotation direction occurs randomly either clockwise or counter clockwise after each stop and break time.

Data

- Housing: solid wood mahogany with brass plates
- Springs: nickel chromium steel coated with 24 carat gold
- Springs covered with soft PVC pads
- Easy handling
- Integrated safety clutch
- Electronically controlled
- 230 / 110 V AC, 4 Watt
- Virtually silent
- Weight: 4,2 kg
- Dimensions: h 190, w 290, d 290 mm

WTS 4 Galaxy



Aluminum silver nature anodized housing with a blown smoked acrylic glass hood. The watch winder gets illuminated from below. Accommodation for up to 4 watches to be kept running at the same time. Rotating times and stops are controlled electronically. Rotation direction occurs randomly either clockwise or counter clockwise after each stop and break time.

Data

- Housing: aluminum silver nature anodized with integrated light
- Springs: nickel chromium steel or plastic
- Springs covered with soft PVC pads
- Easy handling
- Integrated safety clutch
- Electronically controlled
- 230 / 110 V AC, 4 Watt
- Virtually silent
- Weight: 3,9 kg
- Dimensions: h 200, w 310, d 310 mm

Special edition in piano black finish (available on request):



Watch Collector



"A great watch winder for your highest requirements".

The housing is German hand crafted of wood and covered with burl wood veneer. A drawer coated with high quality material keeps your precious jewelry. 2 screen doors with key lock protect your watches against dust and unauthorized withdrawal. The screen doors and the drawer can be locked. The watch winder can accommodate up to 9 watches. Each watch winder can be programmed individually according the requirement of the watch movement.

Data

- Housing: solid wood, covered with dark burl wood veneer
- Easy handling
- Drawer guiding full pull-out
- Glass doors with magnetic lock
- Cylinder lock with 2 keys
- Electronically controlled
- Each watch winder can be programmed individually (cw / ccw / run times / stop times)
- Virtually silent
- 230 V AC or 110/115 V AC, max. 5 Watt
- Weight: 18 kg
- Dimensions: h 460, w 470, d 270 mm

Drawer Accessories

- 2 ring ledges
- 6 watch pads
- Storage facilities for writing utensils
- 2 trays with cover pads
- 1 empty tray

BIG 3 and BIG 6



High-Quality Service Watch Winder also for Private Use

- Special development BIG 3 and BIG 6 from MTE (R&D, design and production).
- Research and development as a result of a cooperation with a well-known wrist watch manufacturer of sophisticated and heavy watches.
- Testing and repair shop watch winder in aesthetic design that meets the increasing requirements of the watch manufacturers.
- The BIG is optionally available as installation model without supporting leg.
- Carriage of 12 respectively 24 watches with or without strap.
- The winder has a secure stability because of the weight of its massive construction of steel and aluminum components.
- All rotating elements are supported by ball bearings. They are driven without gear wheels that means extremely low noise.
- Reliable synchronous gear motor with strong power, long life time and very low noise.
- Robust watch retaining springs and watch case holders with a wide seat area are individually adjustable for all watch sizes. Tight hold will be guaranteed even for the heaviest watches during long-term-tests.
- Easy operation and maintenance.
- Changing rotation direction by switching over at any time.
- The front plate could be created individually on customer's requirement.

Data

- Power supply: 220 - 240 Volt, 50 Hz
(opt. USA/Japan version: 110 - 120 Volt, 60 Hz)
- Power input: 15 watt
- Rotation speed of driving wheel: 4 rpm
- Rotation direction: selectively clockwise or counter clockwise
- Weight: 9,5 kg / 21 lbs
- Max. size (mm): w 450 x h 510 x d 240
- Number of watch retaining springs or watch case holders:
BIG 3: 12
BIG 6: 24



Fig.: Watch Case Holder